

## TEAM LETTER

### **Celebrations! “Let’s have a party!” “Let’s celebrate!”**

No doubt throughout the course of a year we all say this or congratulate someone on another birthday or anniversary! These milestones are important and parties are a great way to get together!

So here’s an invitation to be part of a unique celebration! On **Sat 12<sup>th</sup> July** the “new” cathedral in Salisbury will celebrate its 750<sup>th</sup> anniversary (I say new because for the previous 150 years or so the cathedral had been sited at what we call Old Sarum)

This will be a double celebration for the Salisbury Diocese (of which we are all part) also celebrates 35 years of a very special link with the Episcopal Church of Sudan and Bishops from the Sudan will be there with us for this great celebration.

So how will we celebrate? Everyone is invited to a Pilgrimage (walk) starting at 10.30am from the site of the original Cathedral at Old Sarum. Here Norman soldiers will drive the Bishops from the site of Old Sarum to head the walkers in a “river of colour” to the Cathedral Close via the water meadows (along footpaths) and through the town.

Don’t be put off by the word Pilgrimage – pilgrimages are undertaken for many different and varied reasons and usually involve travelling to a sacred space. The one you are being invited to join will enable you to join with hundreds of others all walking from Old Sarum to the Cathedral Close where there will be various entertainments – a marching band, Morris dancing and local drama group performances (12.45-1.45 pm). There will also be a display of photographs and Sudanese crafts in Wren House. At 2pm Bishop David, with the newly elected Archbishop of the Sudan, Archbishop Daniel, will bless the statue of Canon Ezra, marking the 35<sup>th</sup> anniversary of the Sudan/Salisbury Link and there will be an outdoor service of celebration, thanking God for all that the Cathedral and the Sudan link means to us and others throughout history.

In the Middle Ages when people had made a pilgrimage, they wore a badge as a sign that they had completed a pilgrimage – this was often a shell. Following in this tradition all who attend are asked to wear a shell badge. Groups are asked to carry colourful banners so that a “River of Colour” is created as the pilgrims move towards Salisbury.

This should be a great day out (it is free apart from parking) – the Savernake Team of Churches hopes to run a bus from the team - so that people can travel together and get some feeling of that companionship that Chaucer’s Pilgrims in the Canterbury Tales felt as they made their way to Canterbury.

Don’t miss this once in a lifetime opportunity !

For more details please look at the website-  
[www.salisburyanglican.org.uk/sarumpilgrimage](http://www.salisburyanglican.org.uk/sarumpilgrimage)

I hope to see many of you at this great celebration!

**Mary**

**Your Church in June**

**Let everything that hath breath praise the Lord!**

*Psalm 150:6*

<b>Name and Date</b>	<b>Time and Service</b>	<b>Sides men</b>	<b>Readers &amp; Readings</b>	<b>Prayers</b>	<b>Flowers</b>	<b>Cleaners</b>
1 June Trinity 2	6pm <b>Thanksgiving Songs of Praise</b>	all	Tba	ME	The Three	
8 June Trinity 3	11am Village Communion	Amanda Lesley	Bill – Genesis 12: 1-9 Eileen–Matthew 9: 9-13 & 18-26	Amanda	Caroline	Anne & Amanda
15 June Trinity 4	11am Morning Worship	David Amanda	Joanna - Genesis 18: 1-15	Lesley	Carolyn	
22 June Trinity 5	<b>BRUNCH</b> in the Village Hall	n/a	n/a	n/a	n/a	n/a
29 June Trinity 6	11am <b>5<sup>th</sup> Sunday &amp; Baptism</b> at C. Ducis	n/a	n/a	n/a	n/a	n/a
6 July Trinity 7	6pm <b>Songs of Praise</b> St. Mary’s, Chute Forest	all	tba	tba	all	all

## Dates for Diaries

- June 1<sup>st</sup> Sunday Club** – 10-11.30pm in the Village Hall  
**June 2<sup>nd</sup> Supper Group** – 7.30pm at Quince Cottage  
**June 6<sup>th</sup> Monthly Munch** – 1pm at Providence Cottage  
**June 15<sup>th</sup> Concert** by the Chamber Choir of Royal Holloway at 6pm in St Nicolas'  
**June 22<sup>nd</sup> Brunch** – 10-11am in the Village Hall  
**July 6<sup>th</sup> Annual Service at St Mary's Chute Forest** – 6pm Songs of Praise

**Unusually, no Service in Chute on 22<sup>nd</sup> (see Brunch below) or 29<sup>th</sup> June which is a 5<sup>th</sup> Sunday when we rotate with the Collingbournes, this time in Ducis.**

**Supper Group** is a new opportunity! As the Monthly Munch chose to continue to meet after a Lent Course some 2 years ago, so now an evening group of about ten people have chosen to continue to meet roughly once a month for supper, to listen to a tape and discuss. The current topic is 'Can we build a better world? learning from William Wilberforce'. Please get in touch with David Brown (730236) if you would like to join in this pleasant and interesting evening activity!

**Brunch on Sunday 22<sup>nd</sup> June** is offered instead of a church service because the PCC feels this is a practical contribution on the day after the Fete! As fine a breakfast as you could wish will be served from 10-11am in the Village Hall, and will be free (but donations appreciated!). Please book in advance if you can with a PCC member: Vikki (730388), David & Mary (730236), Amanda (730233), John & Janet (730685), Lesley (730717) or Gareth (731305) so we have some idea of how many sizzling sausages etc. to prepare!

**Concert on Sunday 15<sup>th</sup> June** We are delighted to welcome back the Chamber Choir of Royal Holloway, University of London, probably for their farewell concert in Chute. Work on our organ should have started and they will sing unaccompanied. Those who have heard them before will know this is not a problem! £5 tickets for parishioners will be available on the door, and we don't think you need worry about comfort as there are now cushions on all the pews, thanks to Sally Tweed. This will be a real treat, don't miss it!

**Songs of Praise at St Mary's Chute Forest – 6pm on Sunday 6<sup>th</sup> July**  
We will **clean and prepare the church on Friday 4<sup>th</sup> July from 2pm.**  
Please join us in the satisfying job of restoring this redundant church to life,  
ready for its **special day on Sunday 6<sup>th</sup>**, and do come and join this annual  
service of hymns and readings, with refreshments afterwards.

---



## **CHUTE OPEN GARDENS**

**JUNE 29<sup>th</sup> 2008**

**In Aid of Chute Village Hall Repairs**

**6 SUPERB COTTAGE AND COUNTRY  
HOUSE GARDENS OPEN**

**2.00pm - 4.30pm**

**TICKETS ON THE DAY FROM CHUTE  
VILLAGE HALL**

**£3.00 Adults**

**£1.50 Children**

**TEAS, CAKES AND PLANTS FOR SALE**

Registered Charity Number 305492

## **CHUTE PARISH COUNCIL**

### **Election of Chair and Vice Chair**

At the Annual Meeting of the Parish Council on 8<sup>th</sup> May 08, David Brown and Simon Falla were re-elected un-opposed as Chair and Vice-chair respectively.

### **Planning Applications**

58458/LBC 2 Tolleys Cottage, Cadley: Replace front porch (revision of 57884). No objection by PC

58241/FRev Yew Tree Cottage, Cadley Single & 2 Storey Exts - Amended Plans. Earlier objection maintained by PC

58680/F The Hatchet Inn, Lower Chute. Convert 2 flats to 4 bedrooms. Under consideration by PC

### **Highway Defects**

Don't forget, if you spot a problem that needs remedial action you can report it to the WCC Highways Authority by ringing the dedicated **CLARENCEline 0800 23 23 23** or by e-mailing [clarence@wiltshire.gov.uk](mailto:clarence@wiltshire.gov.uk). You will be given a reference number which you can use if you have any follow up queries.

### **Upper Chute Village Green – Grass Cutting**

You may have noticed that John Withers was kind enough to get his heavy equipment out and attempt to get the grass under control recently. Its not really suited to undulating ground like that but he made the effort – well done. Now I have to note that another member of the community has obtained the right sort of equipment and authorised its use to cut the Green at intervals. You will note Lee Merritt slogging away at it. What would we do without volunteers like these? I know, lose the dogs and the odd sprog or two in the long grass!

**Next Meeting of the Parish Council** will take place on Thursday 26<sup>th</sup> June 2008 at 7.30pm – venue the Village Hall. As always, you will be welcome to attend: the agenda will be displayed around the Parish and the previous (draft) minutes will be displayed on the Council notice board at the Village Hall.

**David Clark (Chute Parish Clerk : Tel 730782)**

**CHUTE FOREST PARISH COUNCIL**  
**ANNUAL MEETING**

**Election of Chairman.** – Cllr Rowan Cherrington was elected as Chairman of the Parish Council.

**Election of Vice Chairman.** Cllr David Close was elected as the Vice Chairman.

**Allocation of Roles and Responsibilities.** Specific Roles and Responsibilities were allocated as follows:

Planning & Footpaths – **Cllr Close.**

Roads – **Cllr Pike**

Playing Fields - **Cllr Cherrington**

Village Hall – **Cllr Milligan**

Police – **Cllr P Caddick**

**Mobile Library Service Review.**

Members noted the review and supported the continuation of the service in its present form.

**Proposed Local Government Reorganisation.**

Having considered a letter from KDC regarding Proposed Local Government Reorganisation in Wiltshire the Members RESOLVED to hold a joint but informal meeting in conjunction with Chute Parish Council to hear a presentation from Mr Richard Munro from Wiltshire County Council on a date to be agreed with Chute Parish Council.

**Finance.**

The Responsible Financial Officer (RFO) presented for approval the internally audited Annual Accounts and Statement of Assurance for the year ended 31<sup>st</sup> March 2008 both of which the Members approved. A copy of the accounts will be available for scrutiny by the public from 21 July until 15 August 2008.

Mr J Foxen was appointed as the Internal Auditor for 2008/2009 and was thanked by the Members for his efforts to date and to reappoint him as the Council's Competent Internal Auditor.

The RFO informed the Members of the receipt of £875.00 in respect of the first half of the Precept for FY08/09.

**Planning.**

**K/58241/F** – Single and two storey extensions on the back and side (amended) at Yew Tree Cottage Chute Cadley SP11 9EB which will be

considered by KDC's Regulatory Committee at its meeting on Thursday 22 May 2008. This is a public meeting and will be held in the Council Chamber, Browfort, Bath Road, Devizes commencing at 2:15pm. The Members having already commented twice on this application noted the meeting and will await the Committee's decision.

**Amenity Skips.** The Clerk having been directed at the Annual Parish Meeting to investigate the supply of amenity skips explained that a 6yd skip supplied by KDC, arriving on Friday and departing on the following Monday would cost £70.00. The Members RESOLVED to defer this item to the next meeting.

**Boundary Committee.** The Clerk confirmed that he had written to the Boundary Committee as directed at the Annual Parish Meeting, but as yet no response had been received.

**Police.** PC Randle although unable to attend presented the following written report:

Luckily not much to report but he is still monitoring oil tanks in the village as county wide there are increasing offences of siphoning (even a small tank can contain over £700 worth of oil at today's prices). No calls in from the village and no reported crime.

**Dates of future meetings.** The date of next meeting was confirmed as Thursday 17<sup>th</sup> July 2008 and subsequent meetings were confirmed as follows:

Thu 25<sup>th</sup> Sep 08 - 7:30pm

Thu 20<sup>th</sup> Nov 08 - 7:30pm

Thu 15<sup>th</sup> Jan 09 - 7:30pm

Thu 19<sup>th</sup> Mar 09 - 7:30pm

**Thu 16<sup>th</sup> Apr 09 – 7:00pm (Annual Parish Meeting)**

Thu 21<sup>st</sup> May 09 - 7:30pm (Annual Parish Council Meeting)

**Philip Gill**

**Clerk to Chute Forest Parish Council**

**01264 398534**

**CHUTE FOREST PARISH COUNCIL**  
**APRIL 2008**

**Annual Parish Meeting**

The Chairman gave the following report:

As this has been a quiet year then my report will be short. I would like to offer my heartfelt thanks to my council for their support and wise advice and secondly to our Clerk, Phil Gill, who has made my job and the work of the council so much easier; in addition, to Roly Williams who looked after the village green for the first part of the year, to Gordon White who stepped in when Roly moved out of the village and to Doug Hirst who takes care of the memorial

Furthermore, my thanks also go to the Village Hall committee and the fete committee, all the unsung people who make Chute a very pleasant place to live some of whom are here tonight, and to all those others who do such sterling work behind the scenes.

Our finances are sound and this year we were able to reduce the FY 08/09 precept by £700 without too much impact on our reserves. However, I anticipate that it will at least rise in line with inflation for FY09/10.

We only had 11 planning applications most of which were minor; we objected to only one, and this was turned down.

The major cause for concern was at the local government level. Wiltshire bid for and got approval to become a unitary authority. We discussed this and were completely against it. We will lose Kennet District Council and instead of being administered from Devizes, we will be controlled from Trowbridge. It is unlikely that that we will see any financial savings and now we learn that we will no longer be linked to Shalbourne, but due to boundary changes, we will be linked to three villages in the Avon Valley namely Netheravon, Enford and Fighledean. We have objected strongly to that change but are not all that hopeful.

Finally, I would ask you to note that I do not plan to continue as Chair of Playing Fields Committee beyond May 2009.



## Reports

The following invited attendees offered reports:

- a. **WCC Cllr R Hall** who spoke about getting Chute Forest on to Ordnance Survey Mapping, and outlined the current situation regarding the proposed grouping of the Parish under the new Unitary Authority.
- b. **Police Sgt M Freeman** who briefed the meeting on the Crime and Detection statistics tables for the area. He closed by saying that Chute Forest was a safe place to live and that his officers will do their best to keep it that way.
- c. **V Chambers (Chute Link Scheme)** who reported that the year has not been an easy one for our Link scheme. With financial reserves empty both Community First and Kennet gave grants. She thanked all the volunteers for their support.
- d. **Mr B Caddick (Emergency Planning)** who reported that during the year there have not been any emergency incidents to report but there are two ongoing issues Avian Flu & Pandemic Flu. He had attended an Emergency Planning training course at Trowbridge on the 8<sup>th</sup> October 2007, where the training concluded with a practical exercise.

All the invites answered questions and the Chairman thanked them all for attending

**Presentation of Accounts.** The Clerk presented the internally audited accounts for FY 2007/2008 which showed:

	<b>Current</b>	<b>Previous</b>
Opening balance:	£2476.35	£1321.07
Income:	£2476.90	£2666.79
Expenditure:	£2272.75	£1511.51
Closing Balance:	£2680.50	£2476.35.

The Clerk then answered questions.

**Footpaths.** In the absence of the WCC Rights of Way Officer Cllr Close reported that all the Footpaths and Bridleways have been walked and signs erected or replaced as appropriate. Issues with two of the Footpaths have been drawn to the attention of the WCC Rights Officer for enforcement action. Cllr Close also highlighted the very good WCC newsletter and their Rights of Way & Bridleways improvement plan.

Cllr Close then answered questions.

**Roads.** In the absence of the WCC Highways Officer Cllr Pike reported that the Parish Steward Scheme was working well, but he does need to be kept informed of both remedial and preventative maintenance works. Cllr Pike then answered questions.

**King George Playing Fields Report.** The Chairman gave a short resume of the meeting of the playing fields committee was held at the pavilion at 9.00am on 24<sup>th</sup> February 2008. In particular, he mentioned the contribution made by Chris & Dorothy Stock, Jim Foxen and Margaret Dawson.

**Village Hall.** Councillor D Milligan reported that the Village Hall remains an outstanding asset to the local community, but there is still a need to raise £50K to carry out much needed repairs. A grant of £5K has been received and fund raising activities continue. Cllr Milligan then answered questions.

**AOB.** The Chairman thanked Mr Yelf for his continuing work with the Neighbourhood Watch Scheme. Mr Yelf took the opportunity to remind others of the threat of heating oil theft.

A member of the Public asked if the PC could look into the supply of skips for non-recyclable items. The Chair directed the Clerk to include this as an agenda item at the next PC Meeting.

The date of next meeting (Annual Parish Council Meeting) is Thursday 15<sup>th</sup> May at 7.30pm in Chute Village hall

**Philip Gill**  
**Clerk to Chute Forest Parish Council**  
**01264 398534**

## VILLAGE DIARY

If your club / organisation would like to participate in this 'forward planner' of Chute events, let Chris Stock (chris.stock@upper-chute.com) have the details and we'll hope to include them. It is not intended that the 'Future Events' section should include regular weekly / monthly events, but will highlight one offs, or specials.

<b>JUNE</b>			
Sun. June 1 <sup>st</sup>	10.00am	Sunday Club	Village Hall
Sun. June 1 <sup>st</sup>	2.00pm	Chute CC v Inkpen CC	K. G. Playing Fields
Sat. June 7 <sup>th</sup>	2.00pm	Chute CC v Charlie Gold XI	K. G. Playing Fields
Sun. June 8 <sup>th</sup>		Private function	Village Hall
Thurs. June 12 <sup>th</sup>	7.30pm	Savernake Team Council	Village Hall
Thurs. June 19 <sup>th</sup>	10.30am	Pram Service	St. Nicolas
Thurs. June 19 <sup>th</sup>	6.30pm	Pewsey Synod	Village Hall
Sat. June 21 <sup>st</sup>	1.00pm	Fete	K. G. Playing Fields
Sun. June 22 <sup>nd</sup>	2.00pm	Chute CC v Shalborne CC	Shalborne
Thurs. June 26 <sup>th</sup>		Chute Parish Council	Village Hall
Sat. June 28 <sup>th</sup>	All day	Private function	Village Hall
Sun. June 29 <sup>th</sup>		Visit to see The Life of Christ	Wintershall
Sun. June 29 <sup>th</sup>	2.00pm	Chute Open Gardens	
Sun. June 29 <sup>th</sup>	2.00pm	Chute CC v Inkpen CC	K. G. Playing Fields

<b>WEEKLY</b>			
Sundays	Times vary	Church service – details under ‘Your Church in . . .’	St Nicolas
Mondays	7.30pm	Line Dancing	Village Hall
Tuesdays		Quiz Night	Hatchet
Wednesdays	10.00am	Mothers & Toddlers	Village Hall
Thursdays	10.30am	Pilates	Village Hall
Thursdays	7.00pm	Chute CC nets	K. G. Playing Fields
Thursdays		Curry night	Hatchet
Fridays	9.30am	Yoga	Village Hall
<b>FUTURE DATES</b>			
July 6 <sup>th</sup>	Chute CC v Wherwell CC		Wherwell
July 10 <sup>th</sup>	Chute CC v Dan Staff XI (Twenty20)		King George Playing Fields
July 12 <sup>th</sup>	Rock in The Park		King George Playing Fields
July 16 <sup>th</sup>	Chute CC v Leckford CC (Twenty20)		Leckford
July 19 <sup>th</sup>	Wetherby Super Sprint Day		Departing Cross Keys
July 24 <sup>th</sup>	Pram Service		St Nicolas
August 2 <sup>nd</sup>	Chute CC v Chris Stock Family XI		K. G. Playing Fields
August 10 <sup>th</sup>	Chute CC v Linkenholt CC		Linkenholt
30 <sup>th</sup> August	Paul Struthers XI v Charlie Gold XI		K. G. Playing Fields
Sept. 7 <sup>th</sup>	Chute CC v Linkenholt CC		K. G. Playing Fields
Sept. 13 <sup>th</sup>	Chute CC v Old Boys		K. G. Playing Fields
Sept. 28 <sup>th</sup>	Autumn Walk		
Nov. 15 <sup>th</sup>	Christmas and Gift Fair		Village Hall
Dec. 6 <sup>th</sup>	Village Christmas Supper and Get Together		Village Hall



**A TRADITIONAL COUNTRY FETE  
KING GEORGE V PLAYING FIELD LOWER CHUTE**

**FANTASTIC ATTRACTIONS**

# **CHUTE FÊTE 2008**

To be opened by Georgie Palmer from BBC South Today



**SATURDAY 21st June 1-4pm**

## **A TRADITIONAL COUNTRY FÊTE**

Pony Rides RAF CHINOOK HELICOPTER  
DOG TRAINING DISPLAY BRASS BAND  
Train Rides TUG-O-WAR CLIMBING WALL  
**BBQ - TEAS - REAL ALE - HUGE SELECTION  
OF STALLS & MUCH MORE !**



# CHUTE FETE 2008

## **PRODUCE STALL**

Please remember the produce stall on fete day; without your contributions of fresh produce, jams, marmalades and preserves, we do not have a stall. Either bring to the stall on Fete day or contact Joanna Buchanan (730288), Marilyn Cripps (730240) or Pat Caddick (730730). Please raid friends and relatives gardens for any fruit, veg or herbs.

Many thanks

***Pat Caddick***

---

## **TEA TENT**

Lesley and Vikki need help for the tea tent.

If anyone could provide a cake or some scones this would be great..Please let either Vikki (730388) or Lesley (730797) know so that we can do our calculations!

Volunteers to help on the day even for just an hour would be very welcome. We need to organise a rota so please get in touch if you can lend a hand.

---

## **FIRST AIDER.**

A qualified first aider is needed. If you can help out please contact Douglas Micklethwait on 730250.

---

## **GIFTS WANTED**

Bottles, unwanted gifts and similar are needed for the fete, the success of which depends on your generosity! Please contact Douglas Micklethwait on 730250 about any items you can spare.

***Tim Curran (730216)***



## **Chute Gardening Club**

Following the hiatus of the Plant Sale (thank you to all who contributed to its success) the club has now got a month off before the:

**Potato Competition Saturday July 5<sup>th</sup>**  
**Flower Show on Saturday July 19<sup>th</sup>**

There are two garden competition classes this year:

**Best Garden for Wildlife**  
**My Favourite Garden.**

Contact anyone on the club committee if you want to enter your garden into either of these competitions.

**Sally Tweed**



## **CHUTE CRICKET CLUB**

If 2007 is to be remembered by the weather, let's hope 2008 isn't remembered for the injury list! To date, and we've only had 2 games, Brian (shoulder), Charlie (foot ligament), Chris S (ankle ligament), Dan (knee ligament), James C (finger), Jon H (groin strain) and Paul (back) have all suffered irritating or debilitating injuries. While these haven't all occurred on the pitch, they have none-the-less complicated team availability and caused selection problems!

Our season opener was against the Dan Staff Colt XI, when great bowling from Charlie Gold (2 for 9 off 7.2 overs), Christopher Hopton (2 for 17 off 5) and Paul Struthers (2 for 23 off 6) restricted the visitors to 143, led by Dan himself on 23 not out. In response, Jamie Aldridge and Michael Richardson led their attack with 3 for 30 off 7.1 and 3 for 15 off 6 respectively. Despite the help of 37 extras, Chute was all out for only 86 in 24.1 overs. As one of the umpires later commented, "the pitch did some very strange things!"

The second game was against Wherwell CC, also at home, and things started most encouragingly! Charlie Gold scored 68 before retiring hurt, Jon Harries was on 49 not out, and there were 42 extras; the result was a total of 180 when batters ran out, albeit on the last ball of the allotted 40 overs. This was the highest score achieved by the reformed Chute CC, so well done Charlie, Jon and Extras! Wherwell entered the fray and at 5 runs for 2 wickets, prospects looked good, even at 20 for 3, Chute were clearly still smiling! However a 153 partnership between James Spackman and Nathan ("Wherwell will be lucky to score 20 in total") Young changed things very quickly, culminating in a final score of 183 for 5 in 29.4 overs. Pick of Chute's bowlers were Charlie Gold (2 for 35 off 5.4) and Jon Harries (2 for 24 off 7), while the youngsters who were drafted in to complete the team struggled valiantly all day, unfortunately with only very limited success.

June sees a fuller programme with matches against Inkpen CC (home and away), an invitational Charlie Gold XI and, Shalborne CC; a sports physiotherapist would be a real benefit to the squad!

If you're interested in playing friendly cricket, do come along to a net session (Thursdays from 7.00pm), or come to a match, or contact me. We're also hoping to organise something for the children (and Mothers!) in the village, details in due course; but if you would be interested in helping to organise this, please let me know – your input would be appreciated!

**Chris Stock, 730613**  
**chris.stock@upper-chute.com**



## **BOURNE VALLEY MOVIES - Helping Chute Village Hall**

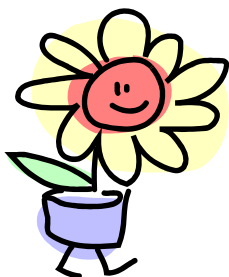
Our last film show for the season is a top class comedy, “Definitely Maybe” (12A). Described in the Times as the best romantic comedy since “Annie Hall”, it features the relationship between a bright daughter and her dad, who has to cope with deep and searching questions about who her mother is. In flashback we learn a lot about three girlfriends, but which becomes the wife is not revealed until the end. Witty, clever and beautifully made, it introduces Abigail Breslin as the bright daughter and Rachel Weisz as one of the girlfriends. This film got less publicity than it deserved, but all the critics praised it.

The showing will be at the Vernham Dean Millennium Hall on Wednesday, 18 June 2008 at 7.30pm (the bar opens at 7pm). Tickets, priced at £5, can be purchased in advance at Hurstbourne Tarrant post office, the George Inn Vernham Dean and Pat Caddick 730730 or £5.50 on the door.

We shall be back again in September with a bumper autumn programme. Meanwhile, thanks for your support – keep film going!

**Pat Caddick 730730**

---



## ***PLANT SALE***

***SUNDAY 15<sup>TH</sup> JUNE***

***2.00pm to 5.00pm***

***HATCHETTS  
LOWER CHUTE (NEXT DOOR TO THE PUB)***

***[emma@flowerpotty.co.uk](mailto:emma@flowerpotty.co.uk)***

## **CHUTE WEDNESDAY CLUB**

Our trip to Leonardslee Gardens on Wednesday May 21<sup>st</sup> was enjoyed by 46 members. We had our usual lovely sunny day and the gardens were looking at their best with many Rhododendrons and Azaleas in full colour. The reflections of their colours in the big lake made it a winner for the photographers among the group. There were many different walks with several seats along the way which were well used.

Our trip on June 18<sup>th</sup> is to the Haynes Motor Museum at Sparkford, Somerset. If you would like to visit this museum, please get your name added to the list.

**Eileen Soper 730698**

---

## **NEIGHBOURHOOD BULLETIN**

I am preparing a Neighbourhood Bulletin with the intention of circulating it via email. The advantage of this is that we will have an almost instant method of getting the information/intelligence out to the community, and just as importantly, a direct contact with myself for any non urgent matters or snippets of information which you quite rightly don't want to waste your time with on hold on the 0845 number (although I am told things are improving!) If anyone is interested in receiving the Bulletin and other local updates, please send me a blank email, entitled Neighbourhood Bulletin to [mark.randle@wiltshire.pnn.police.uk](mailto:mark.randle@wiltshire.pnn.police.uk) and I will add you to the circulation list.

Also, with the aim of improving contact, through the wonders of modern technology, it is also possible to telephone direct to my radio (only when I am on duty) by calling 01380 734001 and entering 78211344 when prompted. Finally, I have acquired a mobile phone so there really is no escape for me, and that is 07947 961 962.

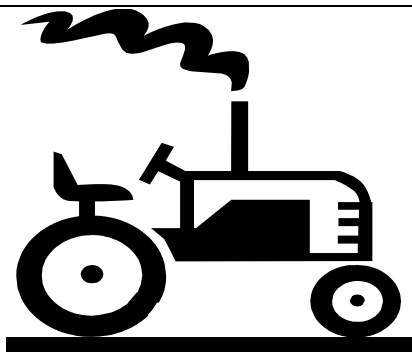
I look forward to receiving your emails as I would like to produce the first Bulletin as soon as possible.

PC Mark Randle 962  
CBM Tidworth Rural  
Phone:0845 4087000 extension 744 817/8  
E-mail: [mark.randle@wiltshire.pnn.police.uk](mailto:mark.randle@wiltshire.pnn.police.uk)

## **DRESSAGE GROOM**

Small private yard requires experienced groom. Must be able to take sole charge of daily management and yard routine. Successful applicant will be a competent rider and be able to turn out to a high standard. Lorry driver (non HGV) preferred. Excellent wage and working conditions. Car may be provided. No accommodation.

**Andover, Hants**  
**01264 730332**



**PADDOCK MAINTENANCE**  
**Topping, Rolling, Harrowing and Fencing.**

**Contact: Robin Casson 07831 311875**

## **FREE!**

Ladies and Gents bicycles available free for collection. May require some slight attention.

Please call Annette on 730382

# The Cross Keys Inn

---

## Upper Chute



‘The finest view from any pub garden in the South of England’

## Honey Dew



New Organic Ale from Fullers now on draught – Very refreshing and great for Summer – Come on try it

---

## Guest Ales for June

*Moles Brewery - Tap / Three Castles - Longbarrow*

---

## The Third Chute Festival Weekend

Live Music

Beer Festival

Pig Roast

Family Day

15 – 17 August



---

## Coach to Newbury Races

There are still a few places on the coach for Saturday 19<sup>th</sup>  
July for the Wetherby Super Sprint Day

The Cross Keys Inn, Upper Chute, Andover, Hampshire, SP11 9ER 01264 730295  
crosskeysinn@upperchute.com

Date	Burbage	C' Ducis	C' Kingston	Grafton	Gt Bed.	Ham/ B'mere	Little Bedwyn	St Katharine	Shalb'n/ Bagshot	Tidcombe
1 Jun 2 after Trinity	8am HC NLH 11am All Age	8am HC ME	9.30am Family Service	11am HC RH	8am HC AD 11am Matins	9.30am HC NLH	9.30am HC RH	6pm E'song AD	11am Family Service NLH	-
4 Jun (Wed)	-	12.30pm HC ME	-	-	-	-	-	-	-	-
8 Jun 3 after Trinity	8am HC AD 11am Fam. Comm LD	9.30am Parish Comm ME	8am HC ME	11am HC RH	9.30am HC RH	11am HC at <i>B'mere</i> AD	8am HC RH	11am Matins lay	9.30am HC LD	9.30am HC AD
11 Jun (Wed)	9.30am HC NLH 7pm S'mr Ct	-	-	-	-	-	-	-	-	-
15 Jun 4 after Trinity	8am HC 11am All Age 6pm E'song	6pm E'song ME	9.30am HC ME	-	6pm Songs of Praise at <i>Crofton Beam Engines</i>	11am HC AD	-	9.30am HC RH	9.30am HC AD	-
22 Jun 5 after Trinity	8am HC 11am Fam. Service	11am Family Service ME	6pm E'song Lay/ME	11am Family Service RH	9.30am HC RH	11am Matins (with Shalb'n)	8am HC RH	11am HC LD	-	9.30am HC NLH
24 Jun	7.30pm LPA	-	-	-	-	-	-	-	-	-
25 Jun	9.30am HC NLH	-	-	-	-	-	-	-	-	-
29 Jun 6 after Trinity	8am HC 11am All Age	11am cluster + Baptism	-	9.30am United HC RH	-	-	-	-	9.30am HC at <i>Bagshot</i>	-